

17" LCD Desktop SAW Touch Monitor

KDT-0170US-SA3B

The 17" LCD Desktop SAW Touch Monitor is designed and produced by KeeTouch for providing the most cost-effective touch solutions to system integrators and VARs. It packs KeeTouch's quality and reliability into an integrated, affordable touch monitor

1. Features

- "Designed for touch" features such as a stable tilt base
- Long-lasting product cycle
- Serial or USB interface
- Base removable or reversible for wall mounting, plus VESA mount option
- Controls on the side rather than the front, plus lockout function for public use
- Digital on-screen display (OSD)
- Worldwide agency approvals



2. Specification

Model No.	KDT-0170U-SA3B; KDT-0170S-SA3B	
Series	DT	
Case/bezel color	Dark gray	
Monitor Dimensions	Width: 388mm Height (inc. base): 300mm Depth (inc. base): 260mm	
LCD Type	Active matrix TFT-LCD	
Display Size	17 " (diagonal)	
Active Area	13.3 " (338mm)×10.6 " (270mm)	
Suggested Resolution	1280×1024	
Supported Resolution	1280×1024 at 60,75 Hz; 1024×768 at 60,70,75 Hz; 800×600 at 60,72,75 Hz; 640×480 at 60,72,75 Hz; 640×400 at 70 Hz; 720×400 at 70 Hz	
Support Colors	16.2M	
Brightness (Typical)	Pure LCD Panel	260cd/m ²
	With SAW Glass Sensor	235cd/m ²
Response Time (Typical)	16ms	
Viewing Angle (Typical at CR>10)	Horizontal(left/right)	70°/70°
	Vertical(up/down)	70°/60°
Contrast Ratio (Typical)	450:1	
Video Input	Analog RGB	
Signal Input	H/V Separate Sync. (TTL)	
Video Signal Input Connector	Mini D-Sub 15-pin VGA	
Frequency (H/V)	30~80KHz / 60~75Hz	
Power Supply	Type: External brick Input (line) voltage: 100-240 VAC, 50-60 Hz Output voltage/current: 12 volts at 4 amps max	
Environment	Operating Temp.	0~50°C
	Storage Temp.	-20~60°C
	Operating RH:	20%~80%
	Storage RH:	10%~90%
MTBF	50,000 Hours	

LCD Back light Life (Typical)	50,000 Hours	
Weight (N.W/G.W)	5Kg /7Kg	
Power Consumption	40W Max.	
Mount options	Removable base, 75 mm VESA mount	
OSD Control	Buttons	POWER,MENU,△,▽, AUTO
	Function	Brightness, Contrast Ratio, Auto-adjust, Phase, Clock, H/V Location, Languages, Function, Reset
Touch screen Type	KAL-0170-3B: 17" SAW 3MM thickness of touch screen sensor	
Touch System Interface	USB or RS232	
Audio output feature	audio output jack or speakers can be equipped upon demand	
Certificates	ETL (same as UL), FCC, CE	
Product Warranty	1 year for LCD monitor; 5 years for SAW touchscreen; 3 years for controller	

3. Accessories

Video Cables: Detachable video cables are included

Power Supply Adapter: A power supply adapter is included.

Power Cable: A North American power cable is included

4. VESA Mounting Interface

This monitor has standard VESA mounting holes on the rear of the unit. The holes are spaced at 75mm standard.

5. Touch Monitor Connection

Note: Before connecting the cables to your touch monitor and PC, be sure that the touch monitor are turned off.

- 5.1 Connect touch monitor to computer by **USB cable** for touch system function;
- 5.2 Connect touch monitor with computer by **video cable** for the display signal;
- 5.3 Connect **power adapter** to touch monitor for 12VDC power;
- 5.4 Press the **power button** on the right side or back of panel to turn the touch monitor power on.
- 5.5 download the driver from either driver CD or AKG website
<http://www.akgtech.com/english/software/softwarePro.html>
- 5.6 refer the following instruction to do the touch system calibration.

6. Install Touch system Driver

6.1 Available Touch system Driver

6.1.1 Drivers can be downloaded from KeeTouch Driver CD:

- Windows 2000 (for both home version & professional version)
- Windows XP (for both home version & professional version)

- Windows Vista (for both home version & professional version)

6.1.2 Drivers Supply from AKG Technical Support Engineer:

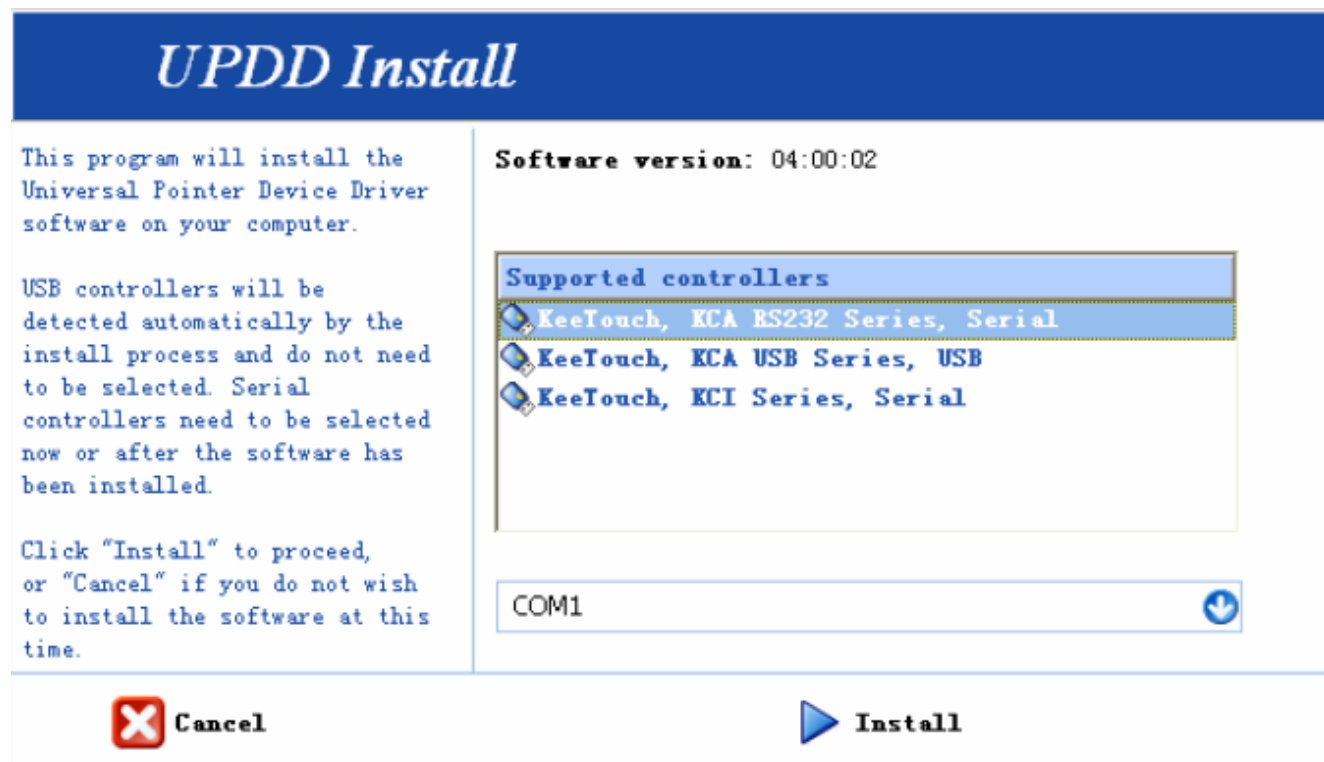
- Windows XP embedded
- Linux for RS232 (Linux 2.4, Linux 2.6, Fedora Core 6, Fedora Core 7. FC2/Ubuntu Linux, Ubuntu 7.04 Linux, Ubuntu 7.10 Linux)
- Linux for USB (Linux 2.6)

6.2 Driver installation and Touch System calibration guide:

Step 1. Preparation: connecting SAW touch screen, controller and application device or computer with correct cable on the integration procedure.

Step 2. Insert the KeeTouch Driver CD in to application system;

Step 3. Follow the instruction to complete the driver installation



(4) Calibration

Find "calibration" from UPDD in All programs and complete the calibration for your touch system at the first time of touch system integration and every time you changed the touch screen sensor or controller.